

ELY, NEVADA

AL-5163 (FAA)

VOR/DME ELY 110.6 Chan 43	APP CRS 179°	Rwy Idg TDZE Apt Elev 6259	N/A N/A 6259
--	------------------------	--	---

VOR/DME-C

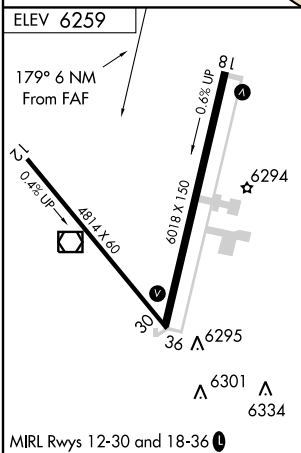
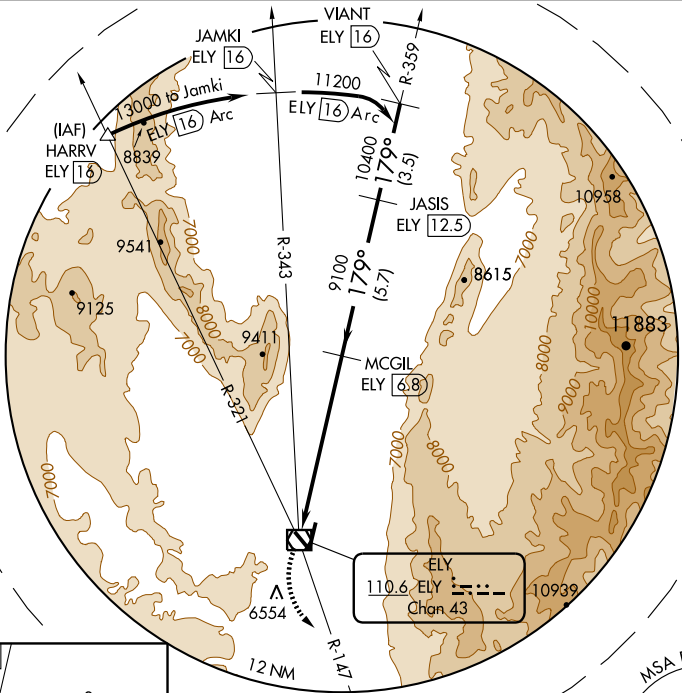
ELY AIRPORT-YELLAND FIELD (ELY)

NA Circling not authorized southwest Runway 12-30.

MISSED APPROACH: Climb to 7900 then climbing left turn to 12000 via R-147 to DOTME/ELY 29 DME and hold.

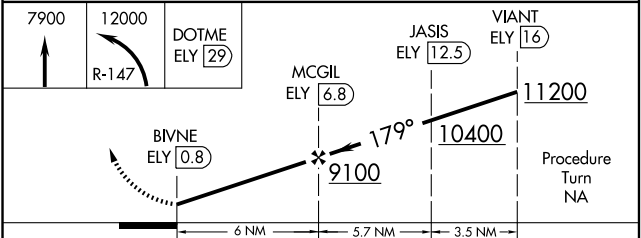
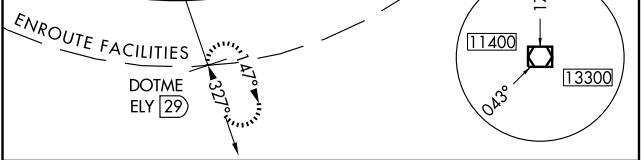
ASOS 120.625	SALT LAKE CENTER 133.45 317.625	UNICOM 122.8 (CTAF)
------------------------	---	-------------------------------

SW-4, 05 JUN 2008 to 03 JUL 2008



MIRL Rwy 12-30 and 18-36

Knots	60	90	120	150	180
Min:Sec					



CATEGORY	A	B	C	D
CIRCLING	7620-1¼ 1361 (1400-1¼)	7620-1½ 1361 (1400-1½)	7620-3	1361 (1400-3)

ELY, NEVADA
Amdt 2 04330

39° 18'N-114° 51'W

ELY AIRPORT-YELLAND FIELD (ELY) VOR/DME-C

SW-4, 05 JUN 2008 to 03 JUL 2008