

ELY, NEVADA

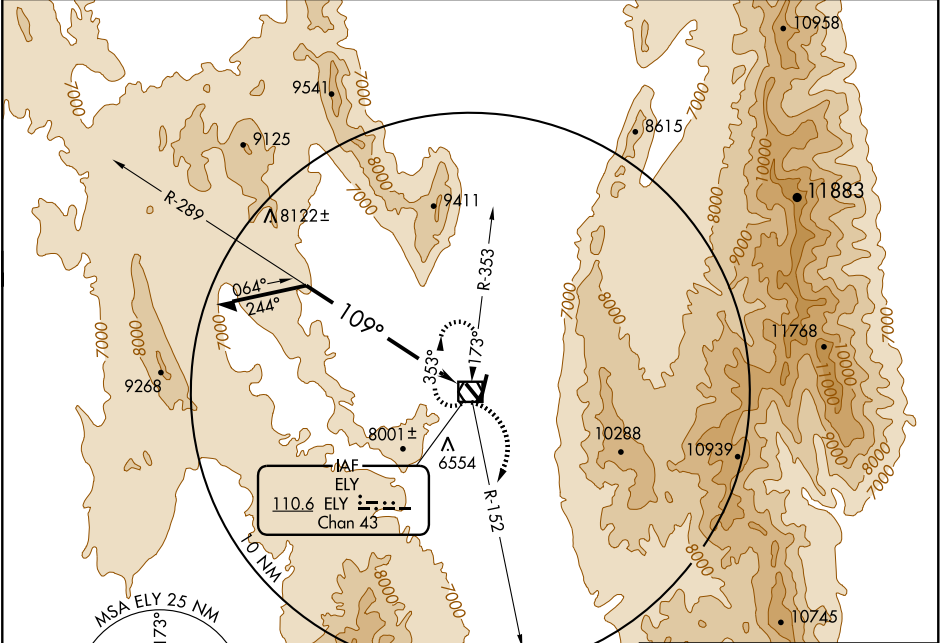
AL-5163 (FAA)

VOR/DME ELY <b>110.6</b> Chan <b>43</b>	APP CRS <b>109°</b>	Rwy Idg TDZE Apt Elev <b>6259</b>	<b>N/A</b> <b>N/A</b> <b>6259</b>
---	------------------------	---	---

**VOR-A**  
ELY AIRPORT-YELLAND FIELD (ELY)

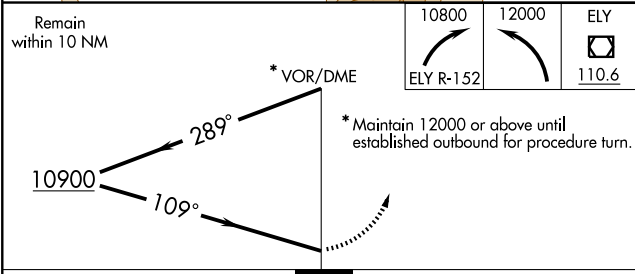
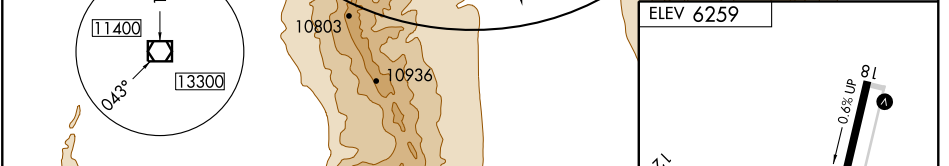
**▽** NA MISSED APPROACH: Climbing right turn to 10800 via ELY R-152, then climbing left turn to 12000 direct ELY VOR/DME and hold.

ASOS <b>120.625</b>	SALT LAKE CENTER <b>133.45 317.625</b>	UNICOM <b>122.8 (CTAF)</b> <b>0</b>
------------------------	---	--



SW-4, 05 JUN 2008 to 03 JUL 2008

SW-4, 05 JUN 2008 to 03 JUL 2008



CATEGORY	A	B	C	D	Knots	60	90	120	150	180
CIRCLING	9400-1¼ 3141 (3200-1¼)	9400-1½ 3141 (3200-1½)	9400-3	3141 (3200-3)	Min:Sec					

ELY, NEVADA  
Amdt 7 04330

39°18'N-114°51'W

ELY AIRPORT-YELLAND FIELD (ELY)  
**VOR-A**