

ELY, NEVADA

AL-5163 (FAA)

RNAV (GPS) RWY 18

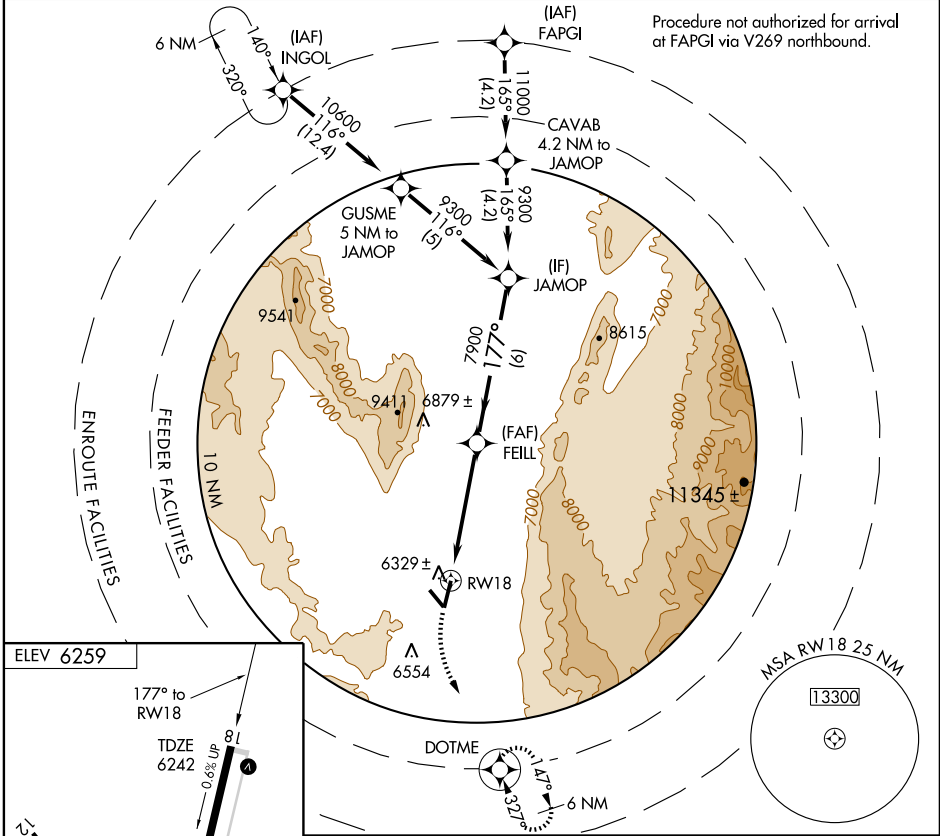
ELY AIRPORT-YELLAND FIELD (ELY)

APP CRS	Rwy Idg	6018
177°	TDZE	6242
	Apt Elev	6259

V GPS or RNP-0.3 required. DME/DME RNP-0.3 NA.
NA Circling NA southwest of Rwy 12 and 36.
 Straight in minimums NA at night.

MISSED APPROACH: Climbing left turn to 12000 direct DOTME WP and hold.

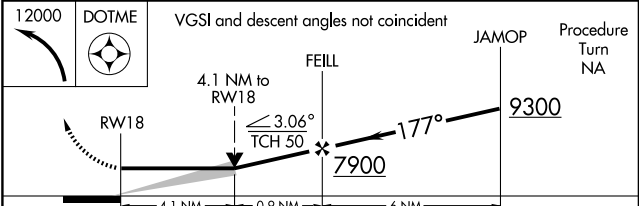
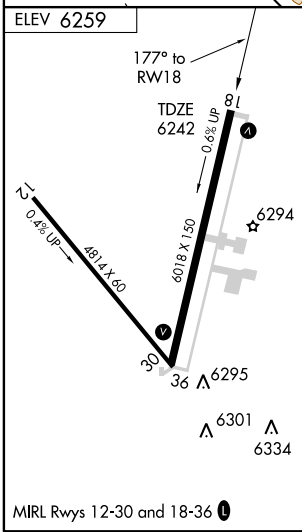
ASOS 120.625	SALT LAKE CENTER 133.45 317.625	UNICOM 122.8 (CTAF) 0
------------------------	---	--



Procedure not authorized for arrival at FAPGI via V269 northbound.

SW-4, 05 JUN 2008 to 03 JUL 2008

SW-4, 05 JUN 2008 to 03 JUL 2008



CATEGORY	A	B	C	D
LNNAV MDA	7540-1¼ 1298 (1300-1¼)	7540-1½ 1298 (1300-1½)	7540-3	1298 (1300-3)
CIRCLING	7540-1¼ 1281 (1300-1¼)	7540-1½ 1281 (1300-1½)	7540-3	1281 (1300-3)

ELY, NEVADA
 Orig-B 04330

39°18'N-114°51'W

ELY AIRPORT-YELLAND FIELD (ELY)

RNAV (GPS) RWY 18